

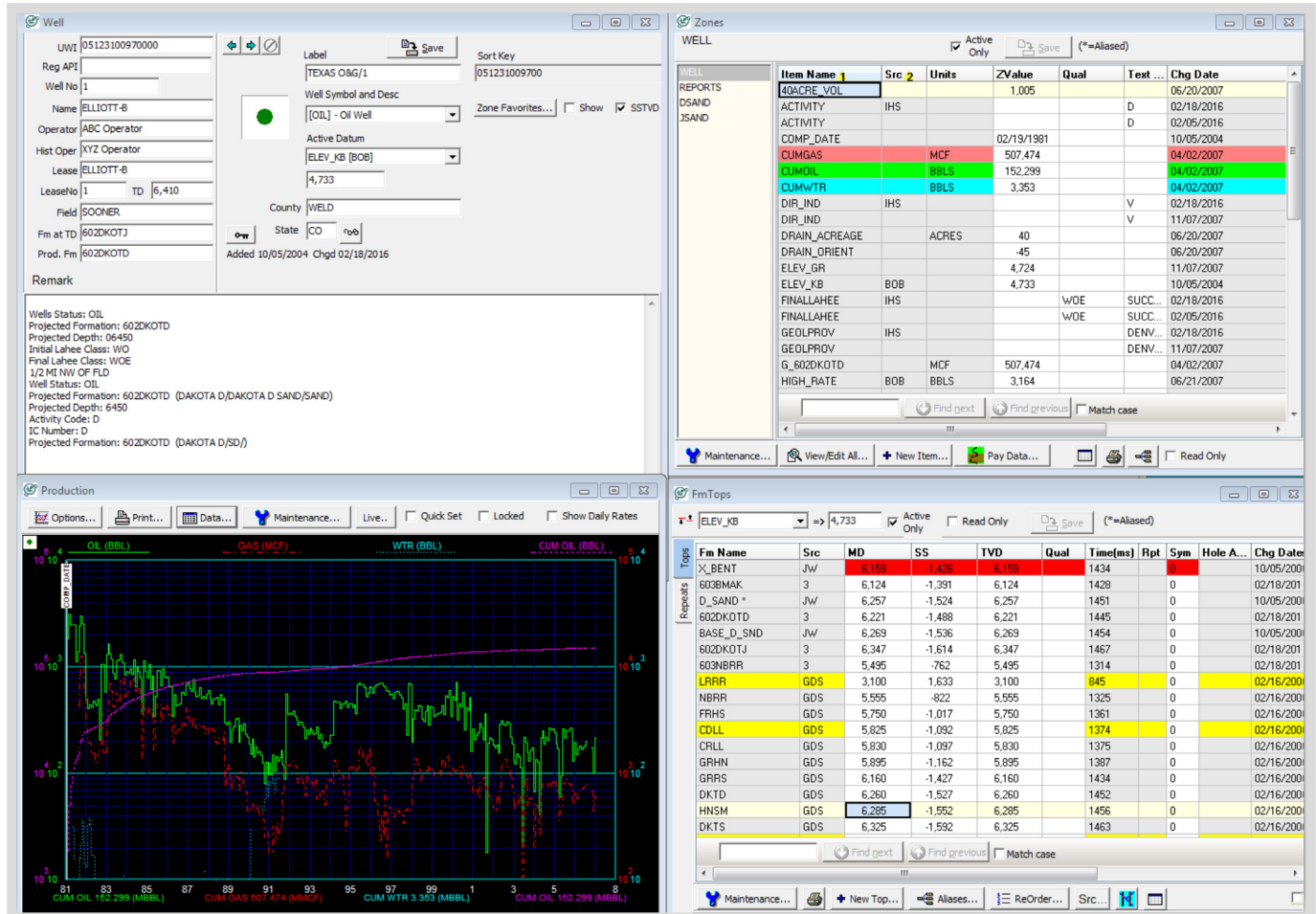
Petra® Geology Software

Tools to Analyze, Visualize,
and Understand the Subsurface



Overview

Petra® is a cost-effective geology software solution built for geologists, engineers, technicians, and analysts working across the full exploration and production lifecycle. It brings together geological, geophysical, and engineering data, making it easier for users to manage, analyze, and visualize subsurface information. From unconventional plays and infill drilling to reserves analysis and production planning, Petra supports a wide range of workflows. Dynamic tools for mapping, cross sections, log correlation, reservoir analysis, and 3D visualization help users extract more value from their data and make confident, informed decisions.



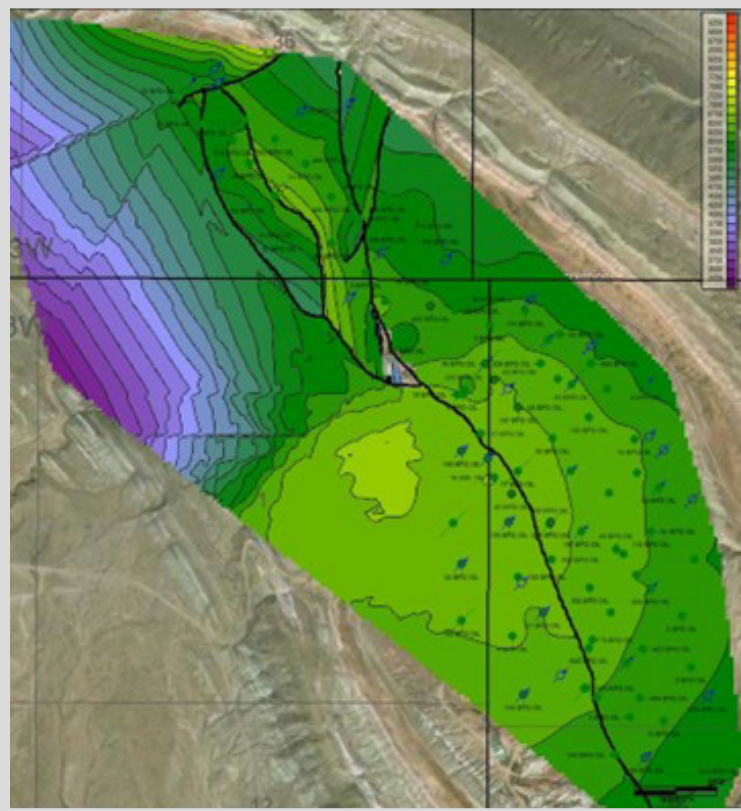
Benefits

- **Comprehensive Visualization:** Advanced tools such as mapping, cross-sections, and 3D modeling help interpret geological data clearly and intuitively.
- **Integrated Workflows:** Supports integration of well, production, and digital and raster log data, streamlining workflows, and enhancing collaboration.
- **Customizable Analysis Tools:** Includes capabilities for reservoir characterization, production forecasting, and detailed log analysis, with tools designed to meet diverse project requirements.
- **User-Friendly Interface:** Designed for ease of use, enabling geoscientists to focus on analysis rather than software learning curves.
- **Scalable for Any Project:** Handles projects of all sizes, from both small to large scale exploration studies.

Key Workflows

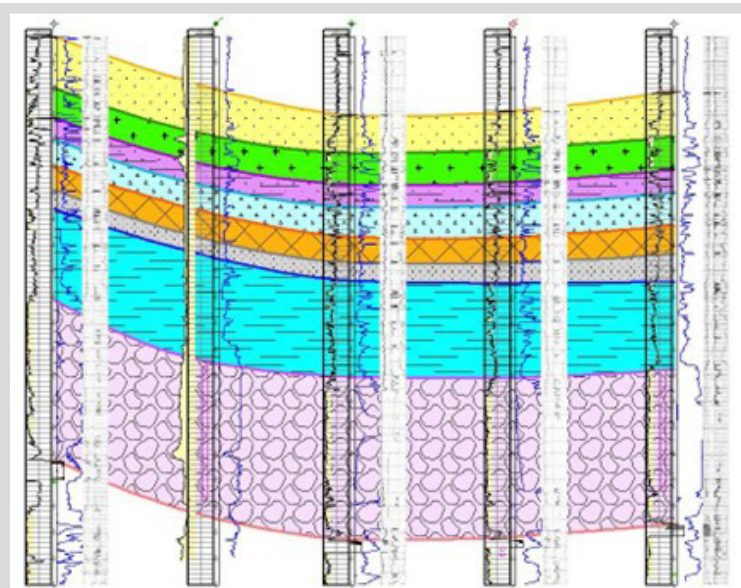
- **Manage and analyze data efficiently:** Direct integration with S&P Global content provides access to current, multi-source data for immediate use. With this most up-to-date information build, interpret models, and analyze your area of interest.
- **Identify opportunities and develop strategies:** With well and production information from S&P Global, pinpoint top-producing areas and production thresholds in your area of interest. Then, use decline analysis and directional well tools to study stimulation strategies.
- **Quickly evaluate prospect areas:** Estimate declines, map recoveries, and determine reservoir pressure using built-in decline, volumetrics, and mapping tools. Apply reusable well templates to expedite lease evaluations.
- **Plan for future production and reservoir depletion:** Use group production plots and decline curve analysis to monitor trends and plan depletion strategies. Use advanced volumetrics to perform hydrocarbon recovery estimates using established industry models.

Features: Modules and Tools



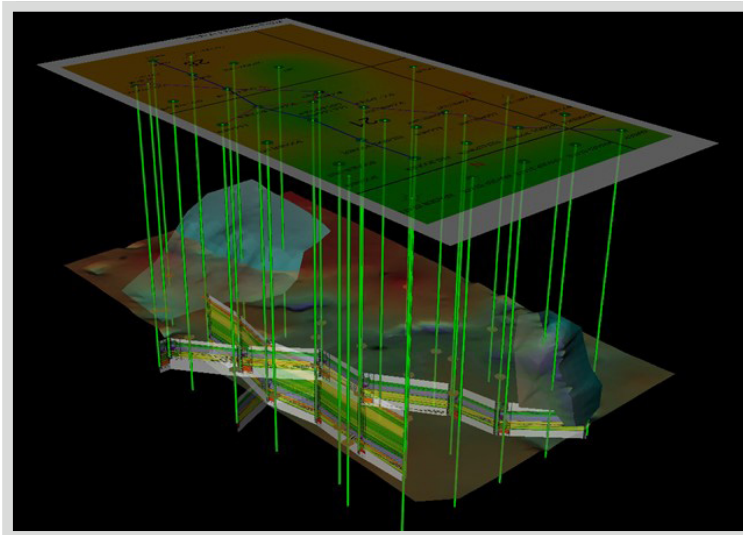
Map

- Graphically display and analyze data with customizable map displays.
- Edit data and create cross sections directly from the map.
- Load and display cartographic data, including grids and culture information to assist in reservoir analysis and location picking.



Cross Section

- Generate customizable cross section displays.
- Edit data and create high-quality graphical outputs quickly.



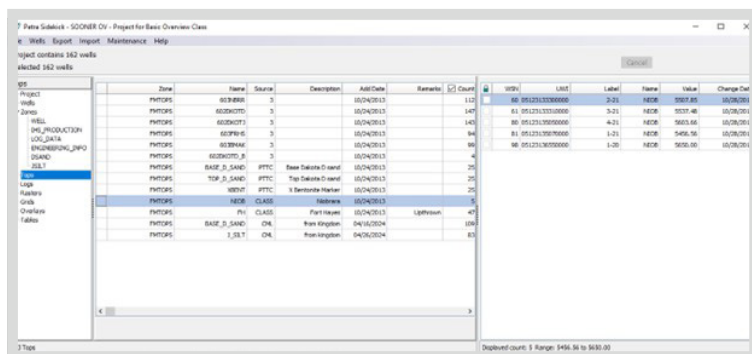
3D Visualization

- Supports a complete 3D view of project data.
- Visualize geological data in 3D for analysis, well planning, and presentation.



Production Group Plot

- Display and analyze historical and average production data for any set of wells.
- Analyze trends, manage reservoirs, and devise depletion strategies.
- Display monthly production for a set of wells, including summing, averaging, or time-normalizing production data.



Petra Sidekick

- External tool that provides users with an easy and fast way to access their Petra project.
 - Access and analyze Petra project data in single-well or multi-well view.
 - Quickly scan wells and view key well statistics in a single step.
 - Import/export well, zone, tops, raster, and log data.
 - Use database tools for global data delete and data maintenance.
 - Import/Export data through SCII file format.
 - Import S&P Global digital and raster logs through Direct Connect.
 - Batch import LAS digital log files and S&P Global raster log LIC files.

About S&P Global Commodity Insights

At S&P Global Commodity Insights, our complete view of global energy and commodity markets enables our customers to make decisions with conviction and create long-term, sustainable value.

We're a trusted connector that brings together thought leaders, market participants, governments, and regulators, and we create solutions that lead to progress. Vital to navigating commodity markets, our coverage includes oil and gas, power, chemicals, metals, agriculture, shipping, and energy transition. Platts® products and services, including the most significant benchmark price assessments in the physical commodity markets, are offered through S&P Global Commodity Insights.

S&P Global Commodity Insights is a division of S&P Global (NYSE: SPGI). S&P Global is the world's foremost provider of credit ratings, benchmarks, analytics, and workflow solutions in the global capital, commodity, and automotive markets. With every one of our offerings, we help many of the world's leading organizations navigate the economic landscape so they can plan for tomorrow, today. For more information visit spglobal.com/commodityinsights.

OFFICE LOCATIONS

spglobal.com/offices

CALL US

Asia-Pacific

+65-6530-6430

EMEA

+44(0)20-7176-6111

North America

+1-800-752-8878

Please contact your S&P Global sales representative or ci.support@spglobal.com

Copyright © 2025 by S&P Global Inc. All rights reserved.

spglobal.com/commodityinsights